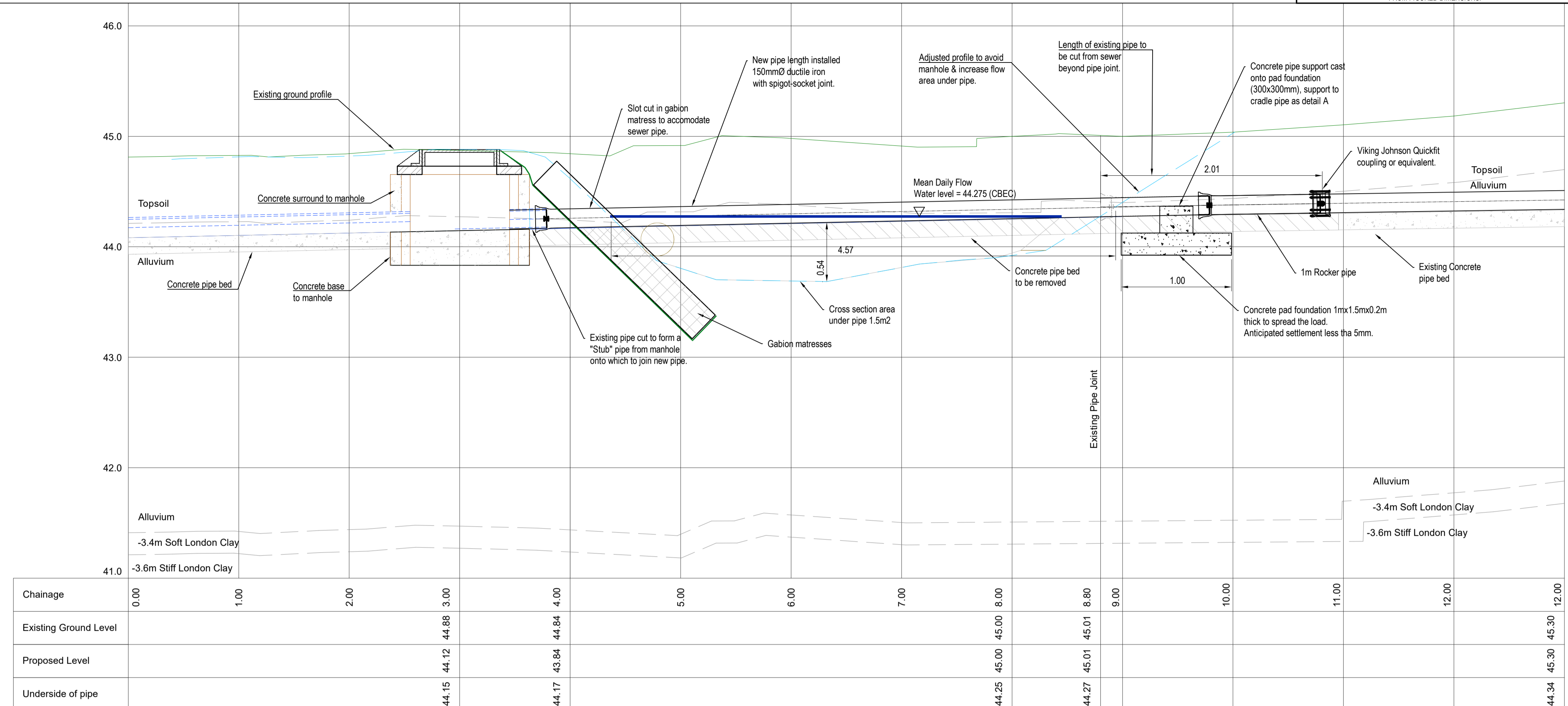
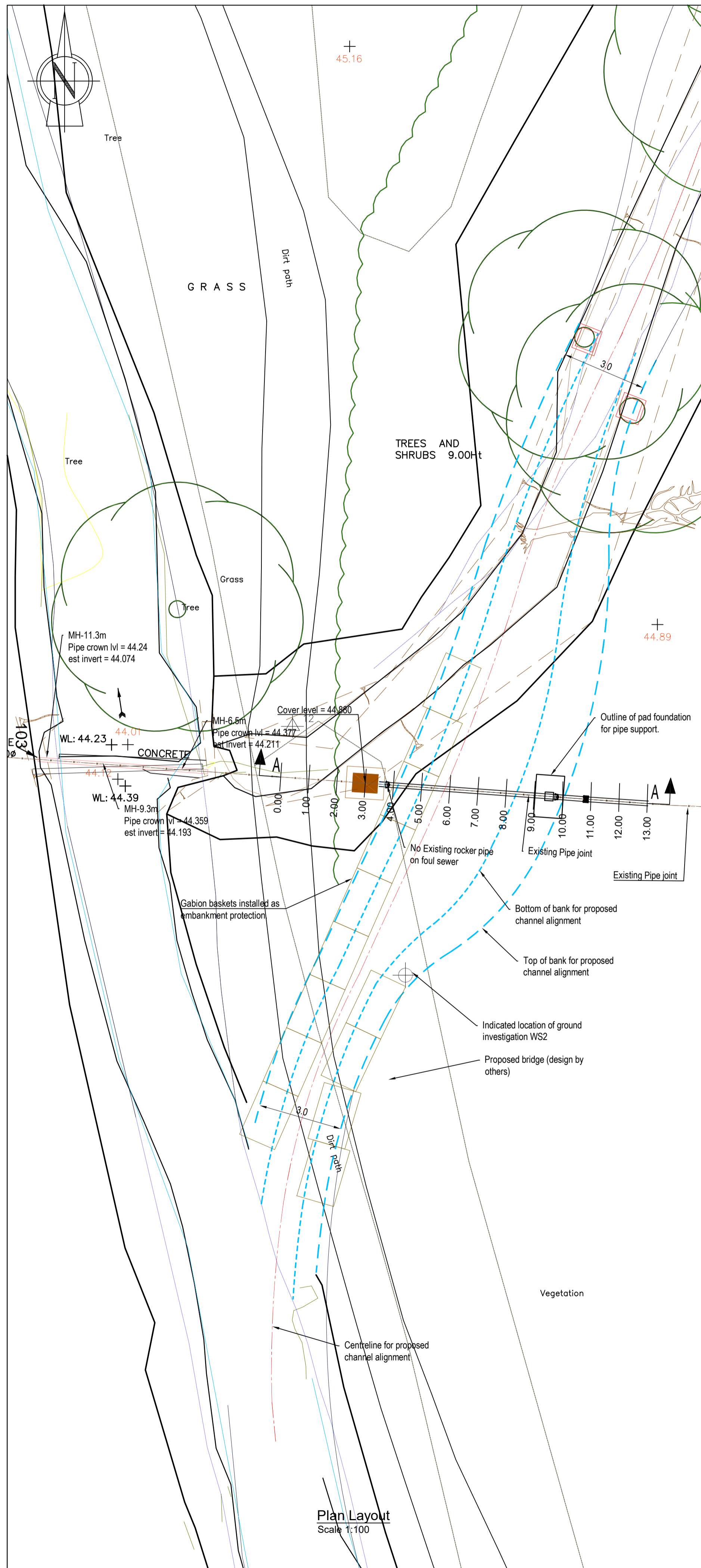
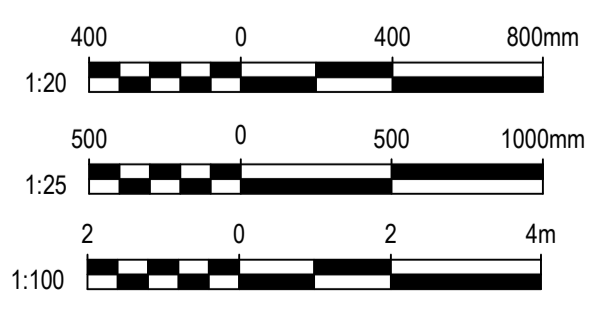
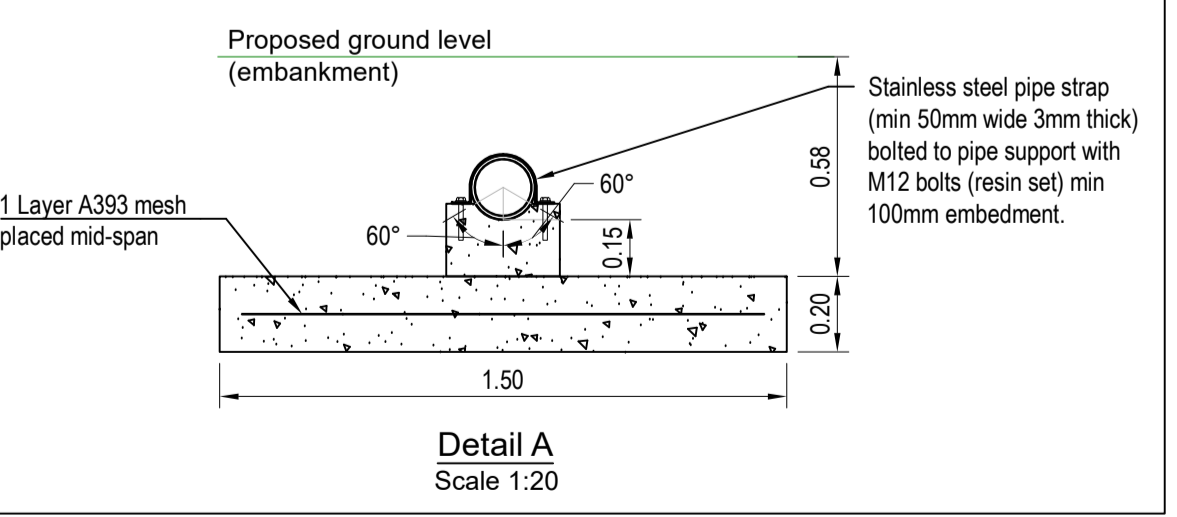
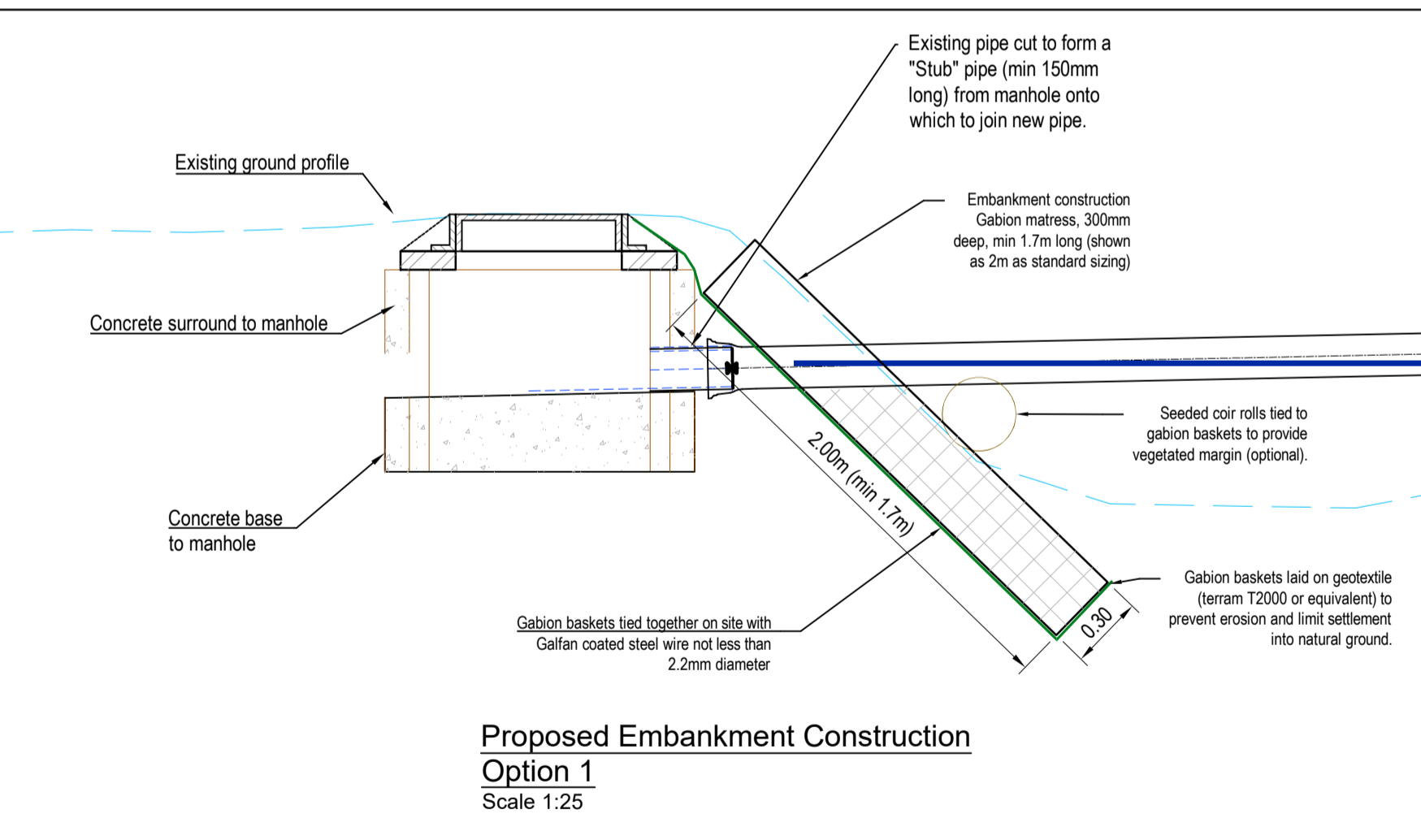


IF YOU HAVE A QUERY CALL US
SCALING FROM THIS DRAWING OR OBTAINING DIMENSIONS ELECTRONICALLY MAY NOT PROVIDE ACCURATE INFORMATION AND SHOULD BE AVOIDED. WORK ONLY FROM FIGURED DIMENSIONS.



Section A-A
Proposed Arrangement
Option 1
Scale 1:25



- This drawing is to be read in conjunction with all relevant Architects, Engineers and Specialists drawings together with the specification.
- All dimensions are in m. Levels are shown in m AOD.
- Design of the proposed channel has been undertaken by CBECC. The details shown on these drawings are inferred from their designs, but should not be relied upon for construction purposes.
- Design of bridges has been undertaken by another consultant. The details shown on this drawings are inferred from their designs, but should not be relied upon for construction purposes.
- Ground information at this location has been based upon the investigations carried out by RSK in their report reference 1921661 R01(01) dated 29.06.2021, and specifically the window sampling hole WS2.
- The proposed arrangements contained within these drawings are for discussion purposes only and should not be used for construction.
- The design has been based upon the assumption that the existing manhole has settled to its full potential (has been in place for decades) and that the pipe runs are supported on concrete ground beams to reduce their relative settlement.
- The gabion baskets shall have hexagonal woven mesh with a maximum size of 8 cm x 8 cm, formed of steel wire min diameter 3mm, treated with Galvan or equivalent protection (to EN 10244.2).
- The gabion baskets shall be filled with a hard and durable angular stone 100-200mm in size (grading 6G) placed and lightly compacted to minimise the amount of voids present.
- Concrete for the pad foundation and pipe support shall be C35 mix or equivalent approved.

Safety Health and Environmental information	
In addition to the hazards/risks normally associated with the types of work detailed on this drawing, note the following:	
Construction	
S.1 - Access through public areas - conflict with members of public	
S.2 - Works within watercourse - flooding of works	
S.3 - High Ground water	
S.4 - Interface with foul sewer	
S.5 - Falls from height	
S.6 - Working next to watercourse - drowning & Weils disease	
Maintenance/Cleaning/Operation	
S.1 - Access through public areas - conflict with members of public	
S.4 - Interface with foul sewer - Weils disease	
S.6 - Working next to watercourse - drowning & Weils disease	
Decommissioning/Demolition	
S.1 - Access through public areas - conflict with members of public	
S.2 - Works within watercourse - flooding of works	
S.3 - High Ground water	
S.4 - Interface with foul sewer	
S.6 - Working next to watercourse - drowning & Weils disease	

B	GABIONS CHANGED TO SINGLE BASKET, NOTE ADDED TO CLARIFY CUT-OUT FOR SEWER	27-04-22
A	1ST ISSUE	25-04-22
REV	REVISION DETAILS	DATE

Ghyston Engineering Ltd
5 FURZE ROAD, FISHPONDS, BRISTOL, BS16 4HR
TEL : 0117 325 0745
email : Alex@GhystonEngineering.co.uk

THIS DRAWING IS THE COPYRIGHT OF GHYSTON ENGINEERING LTD AND MUST NOT BE COPIED, REPRODUCED OR SUBMITTED TO OTHER PARTIES WITHOUT THEIR PERMISSION.

PROJECT TITLE
EMM BROOK
PIPE BRIDGE

DRAWING TITLE
PROPOSED ARRANGEMENT
OPTION 1
STANDARD PIPE LENGTH

CLIENT
SOUTH EAST RIVERS TRUST

STATUS
CONSTRUCTION

SCALE	DRAWN	CHECKED	APPROVED
AS SHOWN	AM HUGHES	AMT	AMH

DRG SIZE	DRAWING NUMBER	REV
A1	GHY-SERT-04-DWG-11	B

This page is intentionally left blank